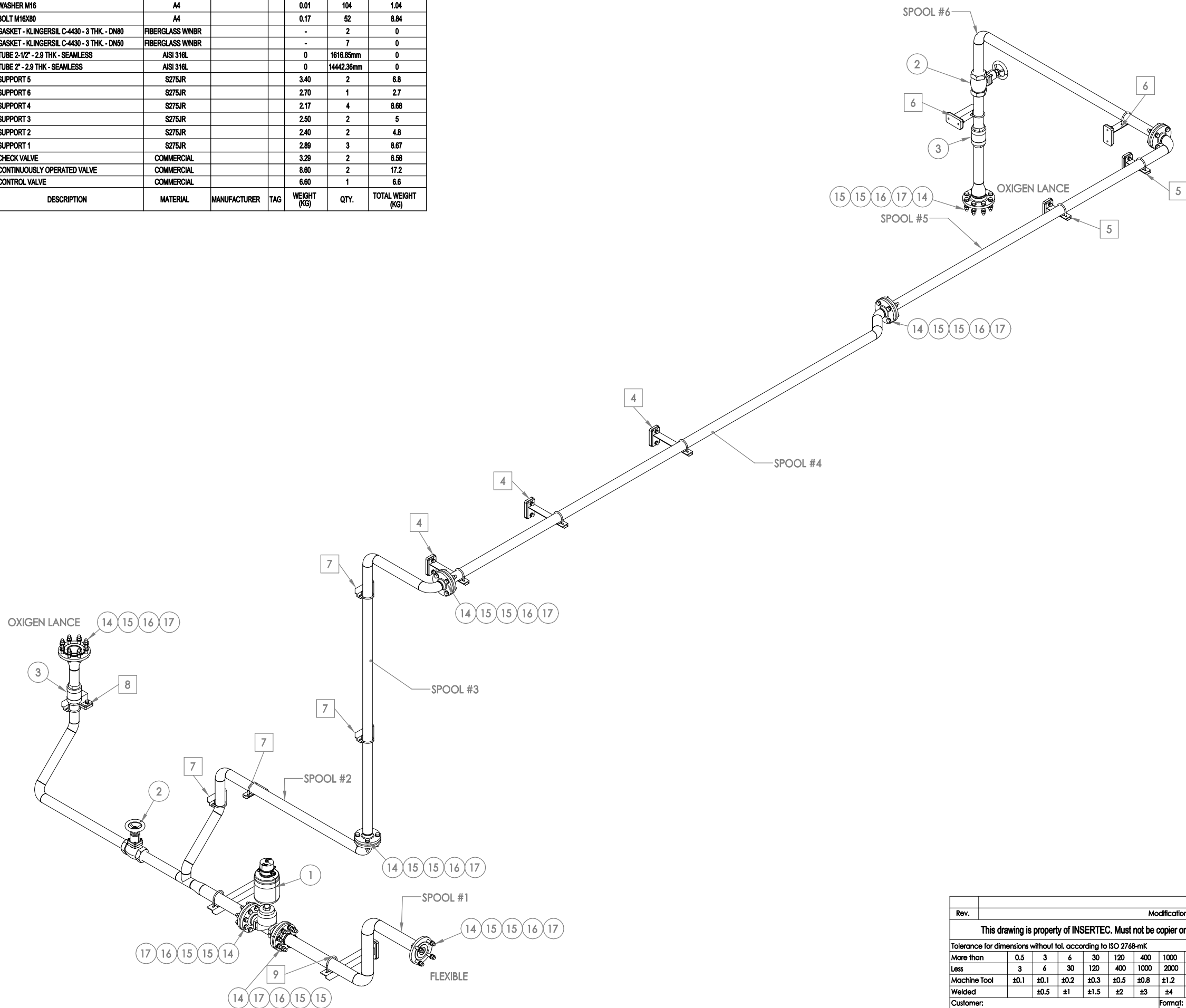

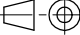
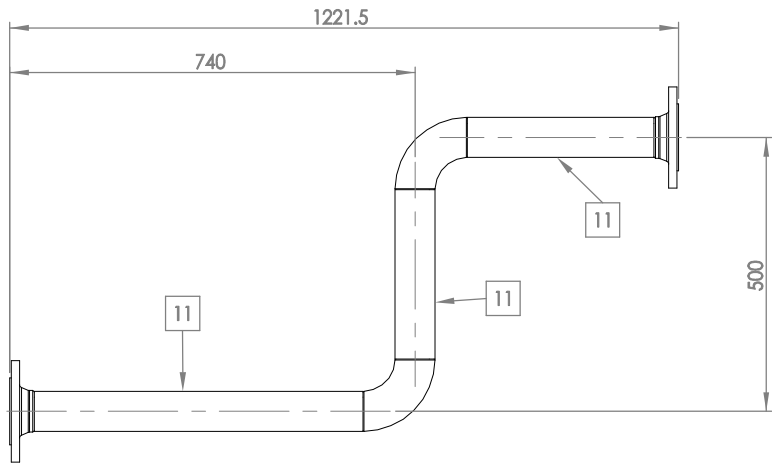


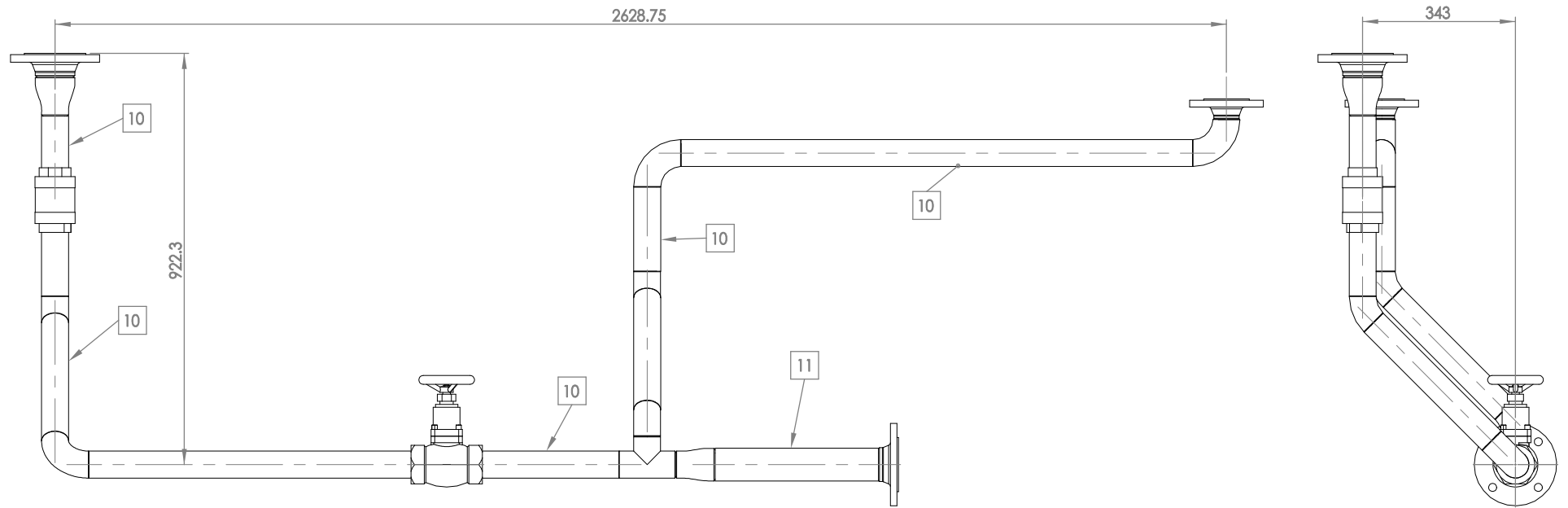
12		11		10		9		8		7		6		5		4		3		2		1
17	DIN934-M16-A4-80	A	NUT M16	A4			0.03	52	1.56													
16	DIN127-M16-A4	A	WASHER M16	A4			0.01	52	0.52													
15	DIN125-M16-A4	A	WASHER M16	A4			0.01	104	1.04													
14	DIN933-M16x80-A4-80	A	BOLT M16x80	A4			0.17	52	8.84													
13	DIN 2690		GASKET - KLINGERSIL C-4430 - 3 THK. - DN80	FIBERGLASS WNBR			-	2	0													
12	DIN 2690		GASKET - KLINGERSIL C-4430 - 3 THK. - DN50	FIBERGLASS WNBR			-	7	0													
11	ASTM A289 TP316L		TUBE 2-1/2" - 2.9 THK - SEAMLESS	AISI 316L			0	1616.85mm	0													
10	ASTM A289 TP316L		TUBE 2" - 2.9 THK - SEAMLESS	AISI 316L			0	14442.36mm	0													
9	2258-3321-TMT-ESR30-GEN05	A	SUPPORT 5	S275JR			3.40	2	6.8													
8	2258-3321-TMT-ESR30-GEN06	A	SUPPORT 6	S275JR			2.70	1	2.7													
7	2258-3321-TMT-ESR30-GEN04	A	SUPPORT 4	S275JR			2.17	4	8.68													
6	2258-3321-TMT-ESR30-GEN03	A	SUPPORT 3	S275JR			2.50	2	5													
5	2258-3321-TMT-ESR30-GEN02	A	SUPPORT 2	S275JR			2.40	2	4.8													
4	2258-3321-TMT-ESR30-GEN01	A	SUPPORT 1	S275JR			2.89	3	8.67													
3	PID 308		CHECK VALVE	COMMERCIAL			3.29	2	6.58													
2	PID 307		CONTINUOUSLY OPERATED VALVE	COMMERCIAL			8.60	2	17.2													
1	PID 304		CONTROL VALVE	COMMERCIAL			6.60	1	6.6													
Nº	PART NUMBER / ARTICLE CODE	REV.	DESCRIPTION	MATERIAL	MANUFACTURER	TAG	WEIGHT (KG)	QTY.	TOTAL WEIGHT (KG)													



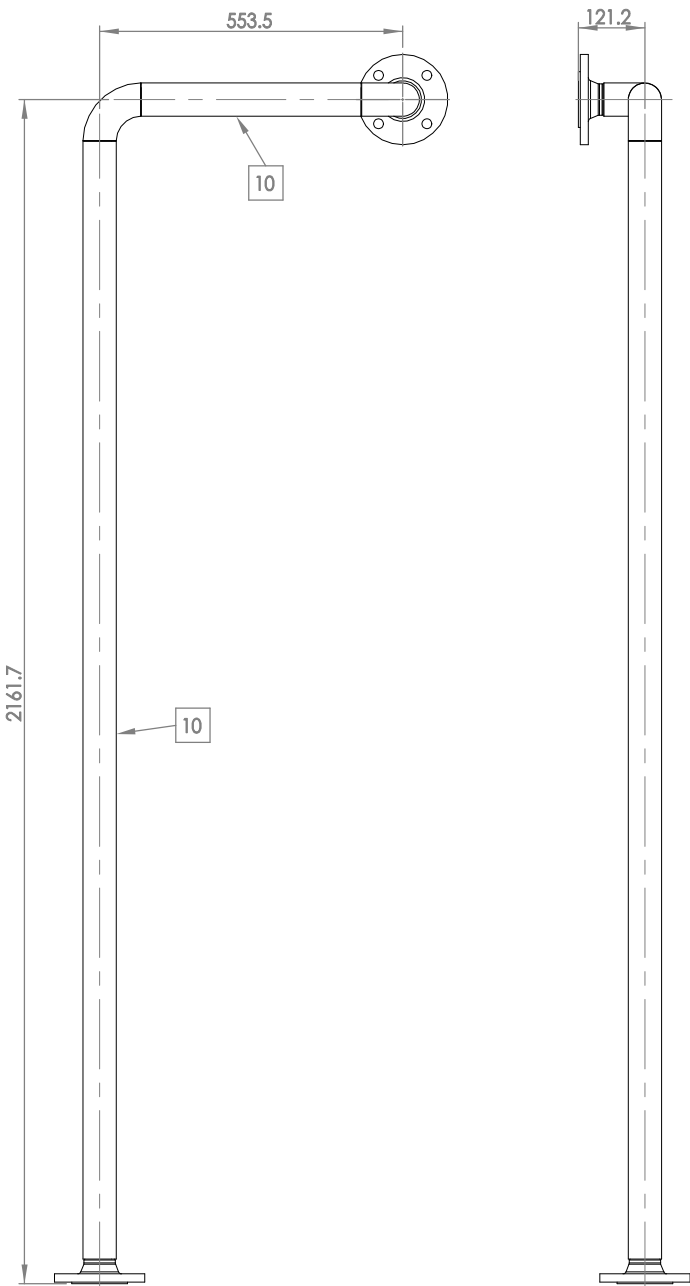
Rev.		Modification										Name		Date					
This drawing is property of INSERTEC. Must not be copier or transferred to third parties in any way without written authorization.																			
Tolerance for dimensions without tol. according to ISO 2768-mK												Name		Date		Material			
More than		0.5	3	6	30	120	400	1000	2000	Draw		A.J.A.G.		03/12/2025		316L			
Less		3	6	30	120	400	1000	2000	4000	Checked		O.A.P.M.		03/12/2025		Weight (kg)			
Machine Tool		±0.1	±0.1	±0.2	±0.3	±0.5	±0.8	±1.2	±2	Verified		B.U.		03/12/2025		225.93			
Welded			±0.5	±1	±1.5	±2	±3	±4	±6										
Customer:										Format: A2		Title ALINVEST TMT (FVRB-2,5-35) OXYGEN							
										Scale: 1:10									
										Project Methode:		Part Number 2258-3311-TMT-ESR30						Revision B	
insertec Furnaces & Refractories																			
												Customer Number						Sheet 1/2	



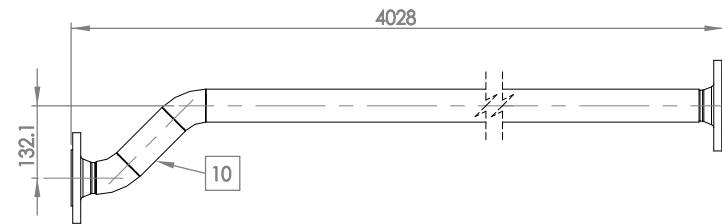
SPOOL #1 - QTY: 1



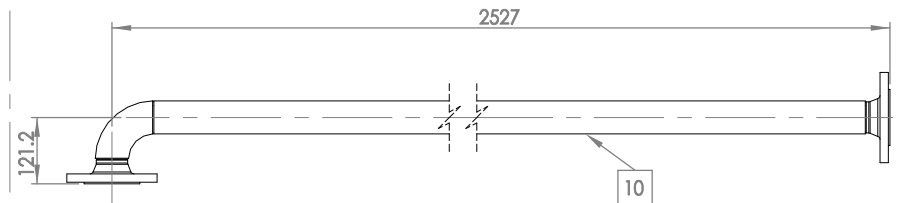
SPOOL #2 - QTY: 1



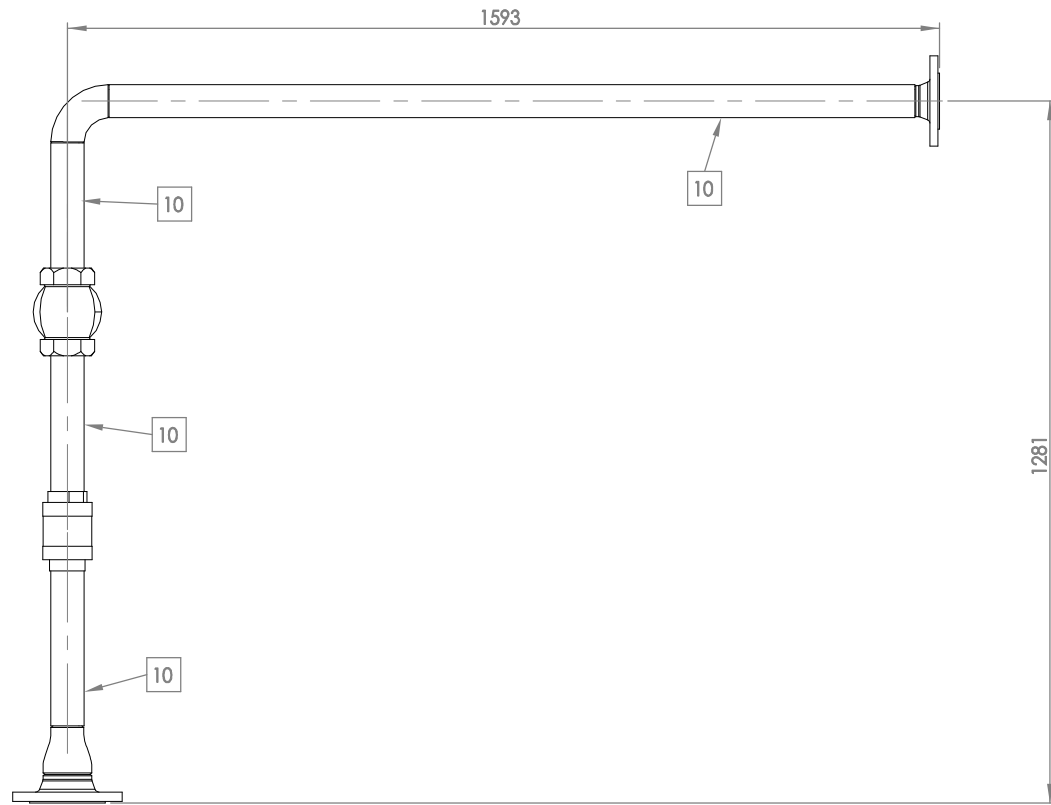
SPOOL #3 - QTY: 1




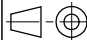
SPOOL #4 - QTY: 1



SPOOL #5 - QTY: 1



SPOOL #6 - QTY: 1

Rev.	Modification								Date	Name		
This drawing is property of INSERTEC. Must not be copier or transferred to third parties in any way without written authorization.												
Tolerance for dimensions without tol. according to ISO 2768-mK										Date	Name	Material
More than	0.5	3	6	30	120	400	1000	2000	Draw	A.J.A.G.	03/12/2025	316L
Less	3	6	30	120	400	1000	2000	4000	Checked	O.A.P.M.	03/12/2025	Weight (kg)
Machine Tool	±0.1	±0.1	±0.2	±0.3	±0.5	±0.8	±1.2	±2	Verified	B.U.	03/12/2025	225.93
Welded		±0.5	±1	±1.5	±2	±3	±	±6				
Customer:					Format:		A2		Title	ALINVEST		
ALINVEST					Scale:		1:10		TMT (FVRB-2,5-35)	OXYGEN		
					Project		Part Number		Revision			
					Method:		2258-3311-TMT-ESR30		B			
							Customer Number		Sheet			
									2/2			